



**MIDWEST USA**  
**CHINESE CHAMBER OF COMMERCE**

## **Supply Chain Information for COVID-19 Personal Protection Equipment (PPE) Updated: 03/25/2020**

Why source through us? The Midwest USA Chinese Chamber of Commerce has been operating in the Midwest region of the US since 2005. We helped build and maintain **sister cities and friendship cities** between the Midwest US and Greater China for more than a decade. Sourcing through us will **reduce the risk** of unnecessary obstacles due to geopolitical conflicts. We have supply chain management **specialists (all AMERICAN) on the ground** in Asia with **no language barriers** on either side and have demonstrated outstanding capability and loyalty to our mission i.e. promote trade and investments between the US and China. We have established a supply chain for critical PPE, such as the N95 face mask. Additional PPE can also be sourced and supplied through our supply chain, as illustrated in the photos below.

IMPORTANT NOTICE FROM CDC: Use of respirators approved under standards used in other countries that are similar to NIOSH-approved N95 respirators: These products are evaluated using some methods similar to those used by NIOSH, and some methods that are different, but are expected to protect HCPs. These devices are expected to be suitable alternatives to provide protection during the COVID-19 response when supplies are short. The country, conformity assessment standards, acceptable product classifications, standards and guidance documents, and protection factor determination are provided in alphabetical order.

Source: <https://www.cdc.gov/coronavirus/2019-ncov/hcp/respirators-strategy/crisis-alternate-strategies.html>

### **Warehouse & Inventory**

Our members and partners have warehouses in both Asia and North America. We do maintain limited inventory locally in the Ohio-Kentucky-Indiana region namely: Dayton, OH; Monroe, OH; and Louisa, KY.

### **Payment, Shipping & Lead Time**

Due to surging demand, we only accept **prepayment** in order to lock down on inventory and shipment.

WE DO NOT MARK UP. WE ONLY PASS ON OUR OPERATING COST. \*Cost may include staffing, handling, bank fees, shipping, storage etc.



# MIDWEST USA CHINESE CHAMBER OF COMMERCE

Shipping cost is **separate** for most items due to surging demand and airline backlog. We do want you to know that we are working very closely with air freight forwarders to expedite PPE shipment. Optional door to door service available via third party.

## Indemnification & Waiver

We require that an indemnification agreement is in place so we may keep your cost down. Otherwise, we assume no liability for any damage caused by the products that we source for you.

## Third Party Fulfillment

We reserve the right to use and outsource to third party fulfillment entities to ensure efficient and cost effective transportation of our goods and services.

## Members & Public Service

As a member supported organization, we reserve the right to prioritize fulfilling orders based on our commitment to serve our members and the community.

## Private Label N95 Respirators

For medical use N95 respirators, we currently only source from **CDC approved private label manufacturers** for 3M#1860 and 3M#1870+ as listed on CDC's website. The supply chain of such products has been disrupted as the majority of the production capacity has been allocated for large orders from established channels. What we are capable of doing is to fulfill orders as EXCESS production capacity becomes available on a daily basis. **Prepayment is required** to participate in this fulfillment process.

## Our Proud Volunteers

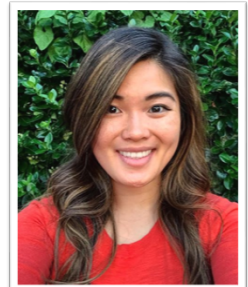
Ziye Liu, P&G, Cincinnati

Jing Yang, P&G, Cincinnati

Sally Kilbacak, P&G, Cincinnati

Benjamin Zhou, P&G, Guangzhou

Li Xue, Chinese Chamber Beijing Office





# MIDWEST USA CHINESE CHAMBER OF COMMERCE

## Personal Protection Equipment

### Medical/Surgical Categories:

1. **Disposable surgical masks, item ref**

**#RZYC**

3-ply earloops

FDA CE certified

50pcs/box, 20boxes/carton

FOB, 3 days lead time from order to shipping, MoQ 500k pcs



2. **N95 medical masks by 3M private label manufacturer, item ref #DTC3X**

Choice of three (when available) CDC approved private label manufacturers for 3M 1860 types

NIOSH N95, FDA

Shortage warning: prepayment only. 20x20 pcs per carton, MoQ 50k pcs



3. **Particulate respirator N95/FFP3, item ref # D374136**

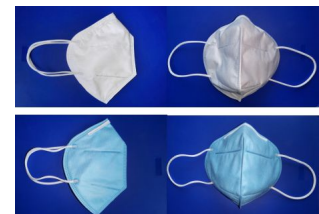
FDA & CE certified

Filters bacteria & dust

Easy to carry flat fold design

Hygiene & skin friendly

Disposable material & environment friendly, MoQ 50k pcs



4. **Surgical protective suits**

FDA & CE certified

Head to toe protection

Face shield, gloves & surgical class

MoQ 5k set



5. **Medical latex gloves, item ref #KSLG2** Size: XS/S/M/L

FDA & CE certified medical grade independent sterilization package, 5.8g

Technical Coating can effectively block sensitizing factors and reduce sensitivity

Use with caution in latex protein allergy, 1000pc/carton, MoQ 100ctn

Long lead time warning: mid April





# MIDWEST USA CHINESE CHAMBER OF COMMERCE

6. **COVID-19 antibody test kit, item ref #KSTK**

Colloidal Gold Method, MoQ 200k

7. **Protective goggles ref #KSPG**

Lens is made of PC polycarbonate, clear, good visual effect, splash-proof

Frame is made of lightweight PVC, soft and bendable, comfortable, MoQ 100k

Non Medical Categories:

8. **3-ply Mask-BFE:95-99.9%**

Size:17.5\*9.5cm, Weight:4g

Material:3-ply 100% virgin non-woven fabric

1st ply: 20gsm spun bonded PP.

2nd ply: 25 gsm melt blown PP (filter)

3rd ply: 20gsm spun bonded PP

Bulk Packed, 50 Masks in a poly Bag, 100 Bags/carton Carton Dimensions: 78\*53\*40cm Carton

Weight:16.5KG

Capacity\*\*: 5.46M Per week

MOQ: 5k pcs



9. **4-ply Mask-KN95:**

1st ply: 45gsm spun bonded PP

2nd ply: 25 gsm melt blown PP (filter)

3rd ply: 25gsm melt blown PP (filter)

4th ply: 45 gsm spun bonded PP

Bulk Packed, 50 masks/box, 10

boxes/carton Carton Dimensions: 68\*30\*29cm Carton Weight: 5kg, MoQ 5k pcs

\*KN95 is substantially equivalent to N95. \*\* Material specifications will vary slightly from factory to factory

Products will vary from factory to factory



10. **Isolation suit (non medical)**

MoQ 50k sets





**11. Contactless IR thermometer, item ref#KSRD**

.Product size: 37\*37\*138mm(L\*W\*H) Product Weight: 47g

Operating temp: 5°C-40°C

Measuring mode: Forehead mode

Measurement range: 32.0°C-42.2°C

Accuracy:  $\pm 0.2^{\circ}\text{C}$ (35.0°C-42.0°C);  $\pm 0.3^{\circ}\text{C}$ (32.0°C-34.9°C/42.1°C-42.2°C)

Voltage source: 2\*1.5V Batteries: size AAA

Display: LCD/LED digital display. Automatic power off: 60s

MoQ 50k

## Large Scale Infrared Scanning System (custom quote, call first)

12. IR236 IR Fever Warning Systems

- large scale scanning, fast
- Non-contact detect, safe
- $\pm 0.3^{\circ}\text{C}$  accuracy, precise
- auto-photograph of the suspect
- 10 days lead time

13. C400M IR Fever Warning Systems

- Non-contact detect, safe
- portable
- easy operate
- $\pm 0.4^{\circ}\text{C}$  accuracy, precise
- 10 days lead time after mid of April

14. T120H Fever Screening Thermal Camera

- Low cost
- $\pm 0.5^{\circ}\text{C}$  accuracy, precise
- 10 days lead time after April



# MIDWEST USA CHINESE CHAMBER OF COMMERCE

## ABOUT US

We build bridges to bring Greater Cincinnati and Greater China closer together. The Midwest USA Chinese Chamber of Commerce is a 501(c)(6) non-profit organization serving and connecting businesses in the entire Midwest region of the United States. Over the past 15 years, the Chinese Chamber has grown and evolved into a recognized leader in the community by providing support services, expertise, and networking opportunities to both local and global businesses.

The Chamber is staffed by a full-time Executive Director and committed volunteers who wish to make our entire region a more attractive region for international business and immigrant entrepreneurship. We help “connect the dots” for our members, often collaborating with partners who share similar goals and values, to contribute to the continued prosperity, growth, and diversity of our region.

## MEMBERSHIP

Joining the Midwest USA Chinese Chamber of Commerce will provide you with instant access to one of the largest regional business networks that focuses on Asian business in general and Greater China in particular. We are a strong China-US business advocacy group with a professional board and dedicated staff of successful business, economics and judicial policy experts, professionals, and ambassadors. Dedicated to our members’ growth and prosperity, we can help expand your business, offering you and your organization access to China (and Asia) connected local business leaders and legislators, and provide valuable savings through our member benefits and services. Explore the following membership opportunities, choose the one that fits you or your organization best, and discover the many advantages of joining our great Chamber of Commerce. Your support is crucial to us. Join us now. Thank you.

Please return this slip to Midwest USA Chinese Chamber, 3 E 4th St. Cincinnati, OH 45202 or visit [www.china-midwest.com](http://www.china-midwest.com) and join us online.

General Partners (annual membership)	Elite Partners (annual & lifetime membership)
<ul style="list-style-type: none"><li>• Innovators – \$750</li><li>• Bronze (Patron) – \$1,500</li><li>• Silver (Sustaining) – \$3,500</li></ul>	<ul style="list-style-type: none"><li>• Gold (Impact) – \$5,600</li><li>• Platinum (Chairman’s Circle) – \$10,000</li><li>• Diamond (Ovation) – \$25,000</li></ul>

I would like to join the chamber at the \_\_\_\_\_ (please circle one above) level. Please invoice me ( ) monthly, ( ) annually for the membership and call me at \_\_\_\_\_ or email me at \_\_\_\_\_.

Name: \_\_\_\_\_ Company: \_\_\_\_\_